

YOUR RELIABLE PARTNER ON THE ROAD.



POWERFUL 12L ENGINE

To withstand heavy work load.

1

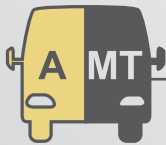
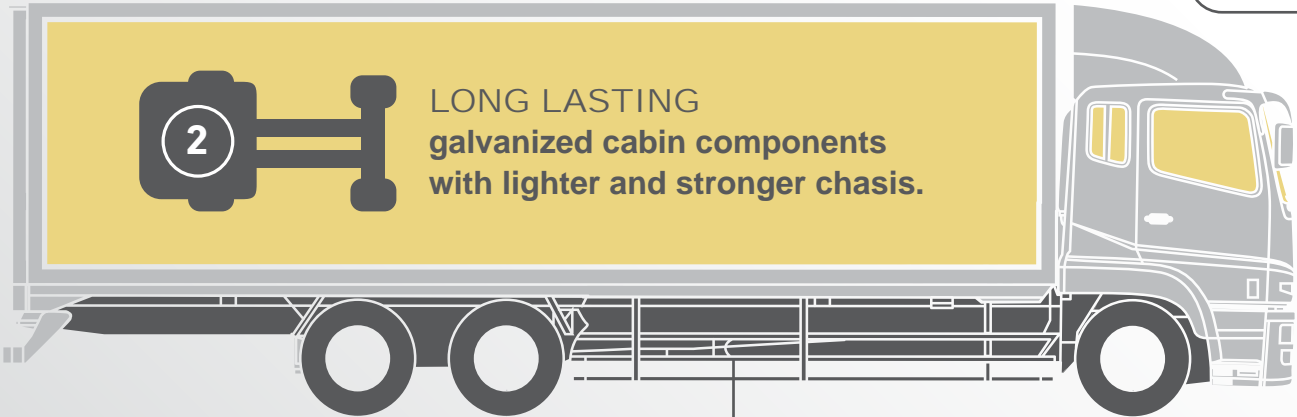


39%
Market Share
in 2015

TOP 5 REASONS TO CHOOSE SUPER GREAT



LONG LASTING
galvanized cabin components
with lighter and stronger chasis.



#Automated & @Manual
Transmission

#INOMAT-II = Smooth driving
with 12 speed of transmission.

3

4

LESS DOWNTIME

with 30km service interval



5

REPUTABLE BRAND



* Terms and Conditions apply. For more information, check with your sales personnel. Images for illustration purposes only.

For Automated Manual Transmission (AMT) variant only.

@ For Manual Transmission (MT) variant, available for selected models only.

Always committed to putting you right at the heart of what we do

EXPERIENCE

MARKET LEADER
&
TOTAL BUSINESS
SOLUTION

Supporting you whenever wherever,
with over 3 decades of experience
in industrial vehicles.

PEACE OF MIND

ASSURANCE
&
CONVENIENCE

Your business, our priority always.
We make it easy for your vehicle
to function at its top best
performance.

AFTERSALES SUPPORT

Quality parts and services assured always.



Extensive
Maintenance & Service
Program



Comprehensive
range of quality
parts



24 - HR
breakdown
service



Over 300
specialised
aftersales
personnel.

Monday to Friday:
8.30am - 5.30pm
Saturday:
8.30am - 12.30pm
Sun/PH:
CLOSED

24 - HR Breakdown Hotline:
9128 5667
Accident Support Hotline:
9755 7336

VALUE SUPPORT

Supporting you with a total business solution
for your industrial vehicle's need.



Pre-owned
Trade In Program



Fuel
Discount Card*



Advance
Fleet Management
System - GPS*



Insurance
Consultancy Services



Express Service*



Financial Services

10 TUAS AVE 18
6864 0698

18 TUAS AVE 10
6863 6864

59 SENOKO RD
OPEN TILL 11PM
6500 3168

14 BENOI RD
PARTS DEPOT
6864 0939

48 CHANGI SOUTH ST 1
6592 8869 (STVE)

* Only Applicable for Goldbell's Commercial Vehicles
^ Within 60 minutes, you can have your vehicle checked and serviced.

All for you



SUPER GREAT

EURO V

PRIME MOVER / 6x4 / 8x4

BUILT FOR GREATNESS

*IMAGES ARE FOR ILLUSTRATION PURPOSES ONLY AND MAY VARY FROM ACTUAL VEHICLE.



mitsubishi fuso truck & bus corporation

SHAPING FUTURE TRANSPORTATION

Since 1932, FUSO is known for trucks and buses that come with trusted quality, economic efficiency, solid and functional design, as well as committed services.

Our product portfolio is one of the most comprehensive in the Industry. Be it our iconic light-duty truck – the FUSO Canter with more than 50 years of history, our

successful FUSO Fighter medium-duty truck, or our Flagship the prestigious Super Great V heavy-duty truck. FUSO also offers a wide range of buses – the popular small Rosa buses.

They represent what FUSO stands for: Efficient trucks that deliver safety and the best total cost of ownership to their customers.





All for you



WHAT WE CARE ABOUT

Our trucks and buses build businesses, societies and communities. Therefore, our company slogan "All for you" emphasizes our commitment to our customers, partners and passengers and our desire to become their brand of choice. Our customers' appreciation is the foundation of our business and their needs determine all of our doing.

The FUSO brand is based on four core brand values

Trusted Quality: Ultimate reliability and durability. All for you.

Economic Efficiency: Best lifetime cost advantage, fuel efficiency and ecology. All for you.

Solid & Functional Design: Highest satisfaction of ownership and usability. All for you.

Committed Services: Responsive and responsible customer care. All for you.

FUSO brand movie



APPLICATION



Dump

APPLICATION



Cargo



Tractor

LONG LASTING ENGINE

The 12L engine has superior burning efficiency, it makes the cut for its fuel efficiency, environmental friendliness, and power. The vehicle that can make a big contribution to your business. Combining 12L capacity with large format of this tough engine, you will get maximum power and reliability.



OM457 LA. V/2	265kW (360PS)/1,900rpm	OM457 LA. V/3	295kW (401PS)/1,900rpm
•Max. torque: 1,850N.m (189kgf.m)/11,00rpm		•Max. torque: 2,000N.m (204kgf.m)/1,100rpm	
OM457 LA. V/5	335kW (455PS)/1,900rpm		
•Max. torque: 2,200N.m (224kgf.m)/1,100rpm			

ENVIRONMENTAL PERFORMANCE

The BlueTec® cutting-edge environmental technology is used for producing more eco-friendly trucks. All Super Great models have been certified as a low-emission vehicle (10% reduction in NOx and PM).The BlueTec® technology, which achieves cleanliness and fuel efficiency at the same time, also contributes to reducing CO₂ emissions*.

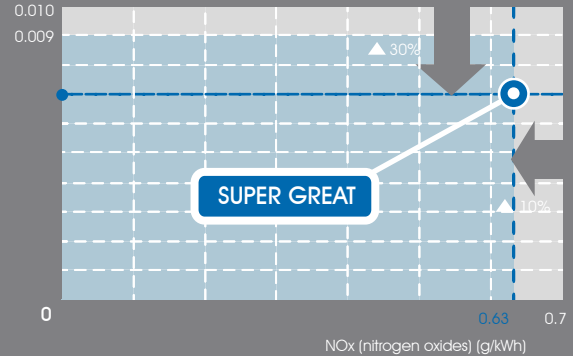
What is BlueTec®?

It is generally known as "urea SCR (selective catalytic reduction)," an environmental technology for clean and efficient use of diesel engines.

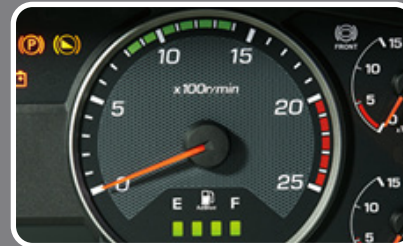


PM (particulate matter) (g/kWh)

*Based on factory testing results in Japan.



- Post New Long Term Emission Regulations in 2009 and 2010
- Certified low-emission vehicle (reductions of NOx and PM by 10%)



Simplified checking of the BlueTec® level

The AdBlue® level for BlueTec® can be checked via the urea level monitor, which is located below the tachometer.



Urea solution tank

SMOOTH TRANSMISSION

The 12-stages INOMAT-II[^] (2-pedal) offers better fuel economy and comfortable drive. The 12-stages transmission allows meticulous gear shifting in multiple stages, setting engine revolution suitable for fuel economy while supplementing a dynamic performance. It also

decreases the fluctuation of engine revolutions during gearshift, thereby reducing driving losses. The 12- stages INOMAT-II[^] selects the most suitable gear according to the driving conditions and load, assuring comfortable and fuel-efficient driving throughout.

[^] Applicable for AMT models:
 FP51SDR3VDEA
 FV51SJR6VDEA
 FV51SS3VDEA
 FS52SS3VDEA



gear shift



2-speed INOMAT-II



Fuel-efficient driving with minimal loss of power

Sequential shifting under maximum load capacity situations



Gear skips under small load capacity situations



Actual operation may slightly differ depending on driving conditions.

Selection of the optimum gear according to driving conditions for comfortable drive and best fuel economy

The 12-stage transmission allows meticulous gear shifting in multiple stages, setting engine revolutions suitable for fuel economy while supplementing dynamic performance on the road.

SAFETY BEGINS WITH PREVENTION

Antilock Brake System (ABS)

The ABS detects the lock of wheels while brakes are applied, and controls the braking force applied to individual wheels preventing unnecessary lock. This improves the stability of vehicle during sudden braking or braking on slippery roads, further enhancing the vehicle's risk aversion capability.

Hill Start Assist System*

EZGO is a hill starting aid supporting the smooth start-up of the vehicle on a gradient and effective in reducing driver fatigue.

*Applicable for AMT models;
1. FV61SDR3VDEA
2. FV61SJR6VDEA
3. FV61SS3VDEA
4. FS52SS3VDEA

Passenger Protection Crash Safety

A robust cab structure and SRS Airbags with seatbelt pretensioners help create a high level of occupant survivability in the event of a collision. The SRS airbag system acts as an aid for the seatbelt, and will not be activated in the case of a transverse impact. It will be activated only when the front impact is greater than the set value on the assumption that the seatbelt is used. Always have your seatbelt on while driving.

Side door beam prevents cab deformation

Side door beam reduces cab deformation and helps to protect passengers in the event of an accident.



Side door beam

SRS airbags

WELL-DESIGNED INTERIOR

COMFORT



Air-suspended seat



High visibility panel

The cockpit is designed to be user-friendly and comfortable since it is the place where the driver spends most of their time. It is equipped with:

Comfortable air-suspended seat reduces driver fatigue*

The air-suspended driver's seat offers superior comfort and reduces driver's fatigue. Its multi-position adjustment adapts for most driving sizes.

Foldable passenger seat for extra cabin space

The passenger seat can be reclined to a flat position or folded for effective use of space. In its fully folded position, the driver is able to stand up straight and change into their overalls or other work attire.

*Applicable for AMT models;

- 1.FP51SDR3VDEA
- 2.FV51SJR3VDEA
- 3.FV51SS3VDEA
- 4.FS52SS3VDEA

High visibility display panel

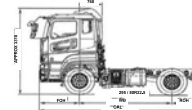
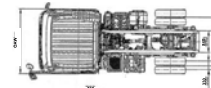
The high visibility panel provides accurate vehicle information, which are necessary for safe and reliable daily operation. The multiple displays in the meter cluster include outside air temperature readings, data, conventional fuel consumption and various warnings.

The innovative design of the meter cluster uses anti-dazzle LED for all indicators. A 3-inch full colour multi-display monitor is mounted within the meter cluster.

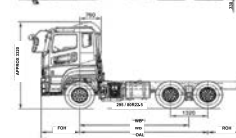
SUPERGREAT EURO V

SUPER GREAT EURO V			
MODEL		FP51SDR3VDEA	FV51SJR5VDEA
Type		Forward	Control
Drive System		4 x 2	6 x 4
Seating Capacity		1 driver & 2 passengers	
DIMENSIONS (mm)			
Wheelbase	WB	3,160	4,520
Theoretical Wheelbase	WB*	-	3,860
Overall length	OAL	5,475	6,690
Overall width	OW		2,490
Overall height	OH	3,310	3,320
Front overhang	FOH		1,370
Rear overhang	ROH	945	800
Cab to frame end		3,245	4,460
Ground clearance		210	220
Tread	front		2050
	rear		1850
WEIGHTS (kg)			
Kerb weight		6,550	8,150
Max G.C.W.		55,000	80,000
Axle Rating	front	6,000	7,000
	rear	12,000	21,600
Max permissible load on 5th wheel		11,450	19,850
PERFORMANCE			
Max speed	km/h		60 (with speed limiter)
Max Gradeability @ GCW	(tan α) %	28.5	22.5
Min turning radius	m	5.5	6.7
ENGINE			
Model		OM457 LA.V/3	OM457 LA.V/5
Type		4 stroke-cycle water cooled direct injection turbo charged diesel engine	
No of cylinder		6 in-line	
Bore and stroke	mm	128 x 155	
Compression ratio		18.5:1	
Piston displacement	cm ³	11,967	
Max output power	kW (Hp) /RPM	295 (401) / 1,900	335 (455) / 1,900
Max torque	Nm (Kgm) /RPM	2,000 (204) / 1,100	2,200 (224) / 1,100
Generator		24 V, AC 80 Amp	
Governor		Electronic control governor	
DRIVE LINE			
Transmission	model	G230-12 (INOMAT-II) - AMT	G330-12 (INOMAT-II) - AMT
	type	12 forward & 2 reverse	
CHASSIS			
Axle	front	Reverse Ellipt, 'I' beam type	
	rear	Full floating type	
Tire	front, single	295 / 80R22.5	
	rear, dual	295 / 80R22.5	
Steering		Ball nut type with integral type hydraulic power booster, Telescopic and tilt steering column with steering lock.	
Suspension	front	Long taper leaf springs with shock absorbers	
	rear	Laminated leaf springs	
Brake system	service	Full air, dual circuit, wedge type with Anti-Lock Braking System	
	parking	Spring loaded type on rear wheels by hand control valve	
	auxiliary	Exhaust brake, Powertard	
Electrical, Batteries		2 x 12 V, 120 Ah	
Fuel tank capacity	litres	280	350

FP51SDR3VDEA



FV51SJR5VDEA

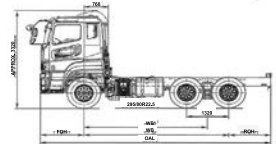


Note:

- Kerb weight shown are subjected to 2.5% variation to allow for production tolerance.
- These specifications are subjected to change without any prior notice. Please contact your local Mitsubishi FUSO Dealer for detailed specifications and equipments available in your market.
- Actual specifications and colors may vary from illustration.

SUPERGREAT EURO V

SUPER GREAT EURO V										
MODEL		FV51SJ2DEA		FV51SKM2DEA		FV51SS3VDEA				
Type	Forward Control									
Drive System	6 x 4									
Seating Capacity	1 driver & 2 passengers									
DIMENSIONS (mm)										
Wheelbase classifications	J	J	K	J	K	M	P	S		
Wheelbase	W/B	4,520	4,520	4,960	4,520	4,960	5,520	6,030	6,530	
Theoretical Wheelbase	WB*	3,860	3,860	4,300	3,860	4,300	4,860	5,370	5,870	
Overall length	OAL	7,280	7,280	7,640	7,200	7,640	9,145	9,960	10,760	
Overall width	OW	2,490								
Overall height	OH	3,320								
Front overhang	FOH	1,370								
Rear overhang	ROH					2,255		2,560		2,860
Cab to frame end		5,050	5,050	5,410	4,970	5,410	6,915	7,730	8,530	
Ground clearance		230			225					
Tread	front	2050								
	rear	1850								
WEIGHTS (kg)										
Kerb weight		8,220	8,390	8,570						
Max G.V.W.		28,000								
Axle Rating	front	8,000								
	rear	26,000								
PERFORMANCE										
Max speed	km/h	60 (with speed limiter)								
Max Gradeability @ GVW	(tan θ) %	45				48.5				
Min turning radius	m	6.9	6.9	7.5	6.9	7.5	8.2	8.9	9.5	
ENGINE										
Model		OM457 LA_V/2			OM457 LA_V/3					
Type		4 stroke-cycle water cooled direct injection turbo charged diesel engine								
No of cylinder		6 in-line								
Bore and stroke	mm	128 x 155								
Compression ratio		18.5:1								
Piston displacement	cm ³	11,967								
Max output power	kW (Hp) / RPM	265 (360) / 1,900			295 (401) / 1,900					
Max torque	Nm (Kgm) / RPM	1,850 (189) / 1,100			2,000 (204) / 1,100					
Generator		24 V, AC 80 Amp								
Governor		Electronic control governor								
DRIVE LINE										
Transmission	model	M130S7 - Manual			G230-12 (INOMAT-II) - AMT					
	type	7 forward & 1 reverse			12 forward & 2 reverse					
CHASSIS										
Axle	front	Reverse Elliot, T beam type								
	rear	Full floating type								
Tire	front, single	295 / 80R22.5								
	rear, dual	295 / 80R22.5								
Steering		Ball nut type with integral type hydraulic power booster, Telescopic and tilt steering column with steering lock.								
Suspension	front	Long taper leaf springs with shock absorbers								
	rear	Laminated leaf springs								
Brake system	service	Full air, dual circuit, wedge type with Anti-lock Braking System								
	parking	Spring loaded type on front & 1st rear wheels by hand control valve				Spring loaded type on rear wheels by hand control valve				
	auxiliary	Exhaust brake, Powertard								
Electrical, Batteries		2 x 12 V, 120 Ah								
Fuel tank capacity	litres	350	400	350	400					

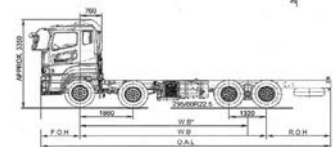
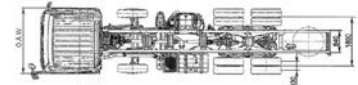


Note:

1. Kerb weight shown are subjected to 2.5% variation to allow for production tolerance,
2. These specifications are subjected to change without any prior notice, Please contact your local Mitsubishi FUSO Dealer for detailed specifications and equipments available in your market.
3. Actual specifications and colors may vary from illustration.

SUPERGREAT EURO V

SUPER GREAT EURO V		
MODEL		FS52SS3VDEA
Type	Forward Control	
Drive System	8 x 4	
Seating Capacity	1 driver & 2 passengers	
DIMENSIONS (mm)		
Wheelbase	WB	6,530
Theoretical Wheelbase	WB*	5,870
Overall length	OAL	10,140
Overall width	OW	2,490
Overall height	OH	3,350
Front overhang	FOH	1,370
Rear overhang	ROH	2,240
Cab to frame end		7,910
Tread	front	2,050
	rear	1,850
WEIGHTS (kg)		
Kerb weight		9,390
Max G.V.W.		34,000
Axle Rating	front	16,000
	rear	26,000
PERFORMANCE		
Max speed	km/h	60
Max Gradeability @GVW	(tan θ) %	38
Min turning radius	m	10.8
ENGINE		
Model	OM457 LA.V/3	
Type	4 stroke-cycle water cooled direct injection turbo charged diesel engine	
No of cylinder	6, in-line	
Bore and stroke	128mm x 155mm	
Compression ratio	18.5:1	
Piston displacement	cm ³	11,967
Max output power	kW(Hp) /RPM	295(401) / 1,900
Max torque	Nm(Kgm) /RPM	2,000 (204) / 1,100
Generator/Alternator	24V, AC, 80 Amp	
Governor	Electronic control governor	
DRIVE LINE		
Transmission	Model	G230-12 (INOMAT-II)
	Type	12 forward and 2 reverse speed
CHASSIS		
Axle	front	Reverse Elliot, 'I' beam type
	rear	Full floating type
Tire	front, single	295/80R22.5
	rear, dual	295/80R22.5
Steering	Ball nut type with integral type hydraulic power booster. Telescopic and tilt steering column with steering lock.	
Suspension	front	Long taper leaf springs with shock absorbers
	rear	Laminated leaf springs
Brake system	service	Full air, dual circuit, wedge type with Anti-lock Braking System
	parking	Spring loaded type on rear wheels by hand control valve
	auxiliary	Exhaust brake, Powerhard
Electrical, Batteries	2 x 12 V, 120Ah	
Fuel tank capacity	litres	400



Note:

1. Kerb weight shown are subjected to 2.5% variation to allow for production tolerance,
2. These specifications are subjected to change without any prior notice. Please contact your local Mitsubishi FUSO Dealer for detailed specifications and equipments available in your market,
3. Actual specifications and colors may vary from illustration.